

BIXOLON

User's Manual

SPP-C200

MOBILE PRINTER

Ver. 1.01



www.bixolon.com

Table of Contents

Copyright	3
WARNING & CAUTION	6
Manual Introduction	9
Product Introduction	10
1. Prepration	11
1-1 Components	11
1-2 Front Part Names	12
1-3 Rear Part Names	12
2. Installation & Connection	13
2-1 Battery Installation.....	13
2-2 Battery Charging	14
2-3 Media Installation.....	15
2-4 Bluetooth Connection.....	16
2-5 Interface Cable Connection.....	17
3. Use	18
3-1 Using Belt Clip.....	18
3-2 Using Control Button	19
3-5-1 Power Button	19
3-5-2 Media Feed Button	19
3-5-3 ERROR/BATT/STATUS LED	20
4. Self-Test	21
4-1 Self-Test Instructions	21
4-2 Self-Test Sample	22
5. Cleaning	23
6. Appendix	24
6-1 Printer Specifications	24

Copyright

© BIXOLON Co., Ltd. All rights reserved.

This user manual and all property of the product are protected under copyright law. It is strictly prohibited to copy, store, and transmit the whole or any part of the manual and any property of the product without the prior written approval of BIXOLON Co., Ltd. The information contained herein is designed only for use with this BIXOLON product. BIXOLON is not responsible for any direct or indirect damages, arising from or related to use of this information.

- The BIXOLON logo is the registered trademark of BIXOLON Co., Ltd.
- All other brand or product names are trademarks of their respective companies or organizations.

BIXOLON maintains ongoing efforts to enhance and upgrade the functions and quality of all our products.

In the following, product specifications and/or user manual content may be changed without prior notice.

Caution

Electronics, such as printers, are prone to damage by static electricity. Therefore, to protect the printer from static electricity, be sure to turn off the printer before connecting or disconnecting the cable to the rear of the printer. If the printer is damaged by static electricity, contact your local dealer.

Compliance information

This device complies with Part 15 of the FCC Rules. Operation is subject to the following two conditions: (1) This device may not cause harmful interference, and (2) This device must accept any interference received, including interference that may cause undesired operation.

NOTE: This equipment has been tested and found to comply with the limits for a Class B digital device, pursuant to part 15 of the FCC Rules. These limits are designed to provide reasonable protection against harmful interference in a residential installation. This equipment generates, uses and can radiate radio frequency energy and, if not installed and used in accordance with the instructions, may cause harmful interference to radio communications. However, there is no guarantee that interference will not occur in a particular installation. If this equipment does cause harmful interference to radio or television reception, which can be determined by turning the equipment off and on, the user is encouraged to try to correct the interference by one or more of the following measures:

- Reorient or relocate the receiving antenna.
- Increase the separation between the equipment and receiver.
- Connect the equipment into an outlet on a circuit different from that to which the receiver is connected.
- Consult the dealer or an experienced radio/TV technician for help.

Caution: Exposure to Radio Frequency Radiation.

To comply with FCC RF exposure compliance requirements, a separation distance of at least 20 cm must be maintained between the antenna of this device and all persons.

Class B Digital Device: Wired Device

This Apparatus complies with class “B” limits for radio interference as specified in the Canadian department of communications radio interference regulations.

This Class B digital apparatus complies with Canadian ICES-003.

This device contains licence-exempt transmitter(s) that comply with Innovation, Science and Economic Development Canada’s licence-exempt RSS(s). Operation is subject to the following two conditions:

- (1) This device may not cause interference.
- (2) This device must accept any interference, including interference that may cause undesired operation of the device.

Cet appareil contient un ou plusieurs émetteurs exempts de licence qui sont conformes aux CNR d'Innovation, Sciences et Développement économique Canada applicables aux appareils exempts de licence.

Son utilisation est sujette aux deux conditions suivantes :

(1) Cet appareil ne doit pas produire d'interférences.

(2) Cet appareil doit accepter tout type d'interférences, notamment les interférences pouvant provoquer une utilisation non désirée de l'appareil.

Caution: Any Changes or modifications not expressly approved by the manufacturer could void the user's authority to operate the equipment.

Informations de conformité

Appareil numérique de classe B: appareil filaire

Cet appareil est conforme aux normes class "B" d'interférence radio tel que spécifier par ministre canadien des communications dans les règlements d'interférence radio.

Cet appareil numérique de la classe B est conform à la norme NMB-003 du Canada.

Waste Electrical and Electric Equipment (WEEE)



This marking shown on the product or its literature, indicates that it should not be disposed with other household wastes at the end of its working life. To prevent possible harm to the environment or human health from uncontrolled waste disposal, please separate this from other types of wastes and recycle it responsibly to promote the sustainable reuse of material resources. Household users should contact either the retailer where they purchased this product, or their local government office, for details of where and how they can take this item for environmentally safe recycling. Business users should contact their supplier and check the terms and conditions of the purchase contract. This product should not be mixed with other commercial wastes for disposal.



WARNING & CAUTION

It describes death, physical injuries, serious financial losses, and damage to data etc. that can be caused to the user.

Do not connect multiple products to one single power outlet. Do not connect the product to a loose power outlet. Use only power outlets that meet the standard. Connect the power cord only to a grounded power outlet. **Noncompliance may cause electric shock or fire.**



Use only authentic products from BIXOLON. **The company will not provide post-sale support for damage or other quality issues that any fake (refurbished) products may incur.**



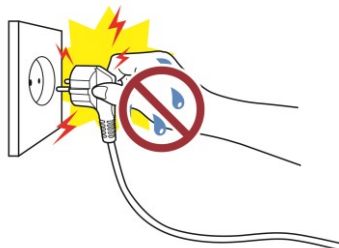
Do not bend or strain the power cord excessively. Push the power cord all the way into the power outlet lest it remain loose. Make sure to hold the cord tight when separating it from the power outlet. Do not remove the power cord while the product is in use. **Noncompliance may cause electric shock or fire.**



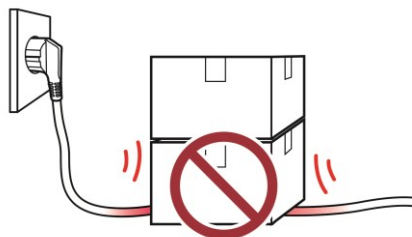
Keep small accessories or other packaging materials away from young children. Beware: children may swallow them. **Mishandling the product may incur injuries. If a child has swallowed any such thing, see a doctor at once.**



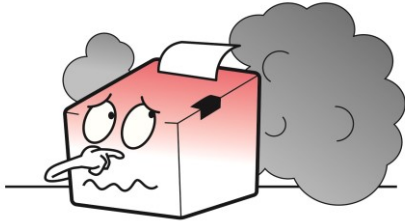
Do not touch the power cord with wet hands when pulling it from a power outlet. If the power plug or outlet is smeared with extraneous matter, wipe it with a dry cloth. **Noncompliance may cause electric shock or fire.**



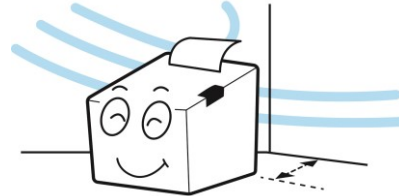
Do not allow the product to be damaged by heavy objects. **Noncompliance may cause electric shock or fire.**



If the product emits a strange sound, burning smell, or smoke, turn off the power immediately and unplug the power cord. If the product is dropped or its exterior is damaged, turn off the power immediately and unplug the power cord. Do not subject the product to shock. **It may start a fire. It may damage the product.**



Install the product in a well-ventilated place by keeping it a certain distance from the wall. The product installed in certain places such as where a lot of fine dust is generated, where the temperature is too high or too low, where there is a lot of moisture or water, and at airports or stations that are used continuously for a long time may suffer serious quality problems due to the influence of the surrounding environment. **An increase in internal temperature may start a fire. Be sure to contact the place of purchase before installing the product.**



Install the product in a fixed place preventing it from tipping over. When moving the product, turn off the power and disconnect all cables connected to the product, including the power cord. **It may damage the product.**



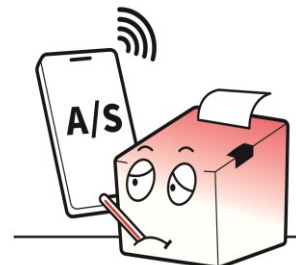
Never disassemble, repair, or modify the product at your own discretion. **When repair is necessary, contact the place of purchase.**



Do not let any foreign substances enter the product. Do not place heavy objects, liquids, or metals on the product. **It may start a fire. It may damage the product.**



If there is a problem with the product, please contact the place of purchase. In addition, Bixelon website (<http://www.bixelon.com>) provides product repair.





WARNING & CAUTION

It's to use the battery properly and prevent danger or physical damage, so please keep it.

Do not subject the battery to strong impact or throw it. Do not disassemble or modify the battery. Do not allow battery leakage to come into contact with your eyes or skin. Keep the battery out of the reach of children and make sure that children do not swallow it. **Otherwise, it can cause the deterioration of battery performance and lifespan, overheating, rupture, or ignition. If it comes in contact with skin or is swallowed, consult a doctor immediately.**



If the battery is not to be used for a long time, disconnect it from the device being used and keep it in a dry place. Even if it is not used for a long time, charge it at least once every 6 months while in storage. Do not place the battery in places exposed to high temperatures (direct sunlight, inside a car, etc.) or where static electricity is generated (near home appliances, etc.), or near heat generating devices (heating device, etc.). Do not put the battery in a fire, microwave, or high pressure (pressure cooker, etc.). Make sure that the product does not come in contact with metals (coins, necklaces, etc.) or liquids (water, salt water, etc.). Stop using the battery if it develops an odor or any other abnormalities such as heat, discoloration, deformation, or leakage while using, storing, or charging the battery.



Do not be confused about the (+) and (-) terminals of the battery. Do not let metal contact the (+) and (-) terminals of the battery. If the (+) and (-) terminals of the battery are smeared with extraneous matter, wipe them clean with a piece of dry cloth. **Otherwise, it can cause deterioration of battery performance and lifespan, overheating, rupture, or ignition.**



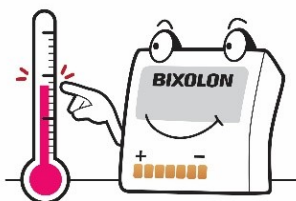
The battery should only be charged using the adapter or charger provided by Bixelon, and if charging fails after the specified charging time (6 hours), stop charging. Do not charge the product longer than the charging time specified in this manual. **Otherwise, it can cause deterioration of battery performance and lifespan, overheating, rupture, or ignition.**



Store and use the battery within the proper operating temperature range.

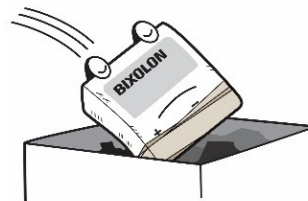
- Charging: 0 - 40°C (32 - 104°F)
- In use: -15 - 50°C (5 - 122°F)
- Long-term storage (more than 30 days): 15 - 40°C (5 - 104°F)

Otherwise, it can cause deterioration of battery performance and lifespan, overheating, rupture, or ignition.



Be sure to turn off the power of the device the battery serves after use. When disposing of the battery, completely discharge the battery and insulate the terminals with tape, etc.

Dispose of it in a designated place according to the relevant laws and regulations of the country.



Manual Introduction

The manual provides basic information on the printer and describes how to install, use, and inspect it. To ensure your safety and prevent damage to your property, make sure you read the manual thoroughly before using the machine.

Manual Symbol Introduction



**Precaution
& Warning**

It describes death, physical injuries, serious financial losses, and damage to data etc. that can be caused to the user.



Note

It provides additional information on the function and performance of the product.



Product Introduction

Offering fast print speeds of up to 80 mm/sec at 203 dpi, the SPP-C200 is an entry-level 2-inch (58 mm) mobile receipt printer featuring ultra compact size and lightweight design. The SPP-C200 perfectly meets today's market requirements by delivering essential receipt printing functions at competitive price range. Equipped with easy-to-replace Single Cell Battery featuring 3000 mAh, which is largest capacity in its class, the printer supports field workers for a long period of time without interruptions. Plus, dependable connectivity with host devices through USB and Bluetooth®. With support for charging and data transferring via universal Type-C® cables, the SPP-C200 provides outstanding usability. Designed to withstand multiple drops from 1.5 m (5 ft.), while providing IP ratings of IP42. A broad range of drivers and SDKs for major operating systems including iOS™, Android™, and Windows® and web/mobile printing software are supported.

The main features of the printer are as follows

1. 2-inch Mobile Label Printer
2. Maximum 80 mm/s (3.15ips) printing speed.
3. Compact and light design 79.5 x 115.5 x 45 mm
(3.13 × 4.55 × 1.77 inch) (W x D x H)
4. Supports Bluetooth V5.0 (Classic / LE)

Product Symbol Introduction

	DC (Direct Current)
	USB

1. Preparation

1-1 Components

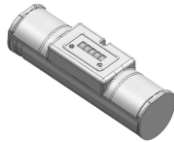


- If any items are missing, contact the place of purchase.
- The image may differ from the actual product.

※ Basic items



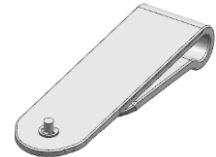
SPP-C200



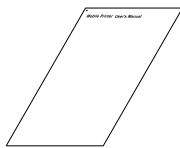
Battery Pack



**USB Type-C
(A to C)
Interface Cable**

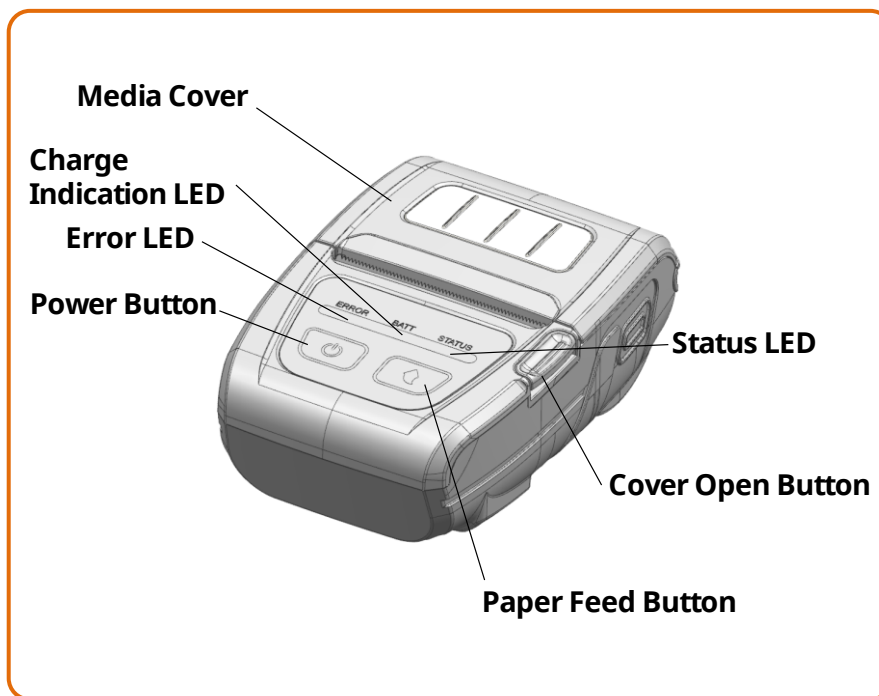


Belt Clip

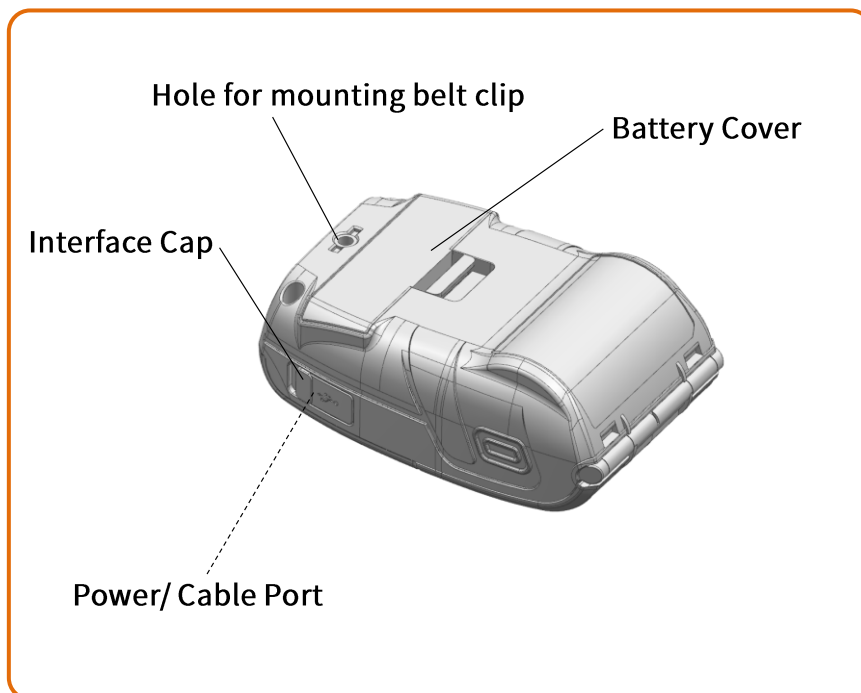


**Printer
Installation Guide**

1-2 Front Part Names

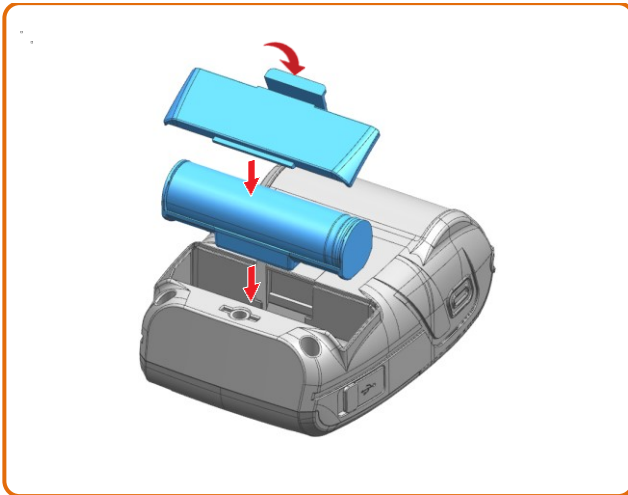


1-3 Rear Part Names



2. Installation & Connection

2-1 Battery Installation



- 1) Insert battery into the printer as pictured.
- 2) Connect the hook of the battery cover to the bottom of the printer.
- 3) Press the battery cover into place until you hear a "click" sound.

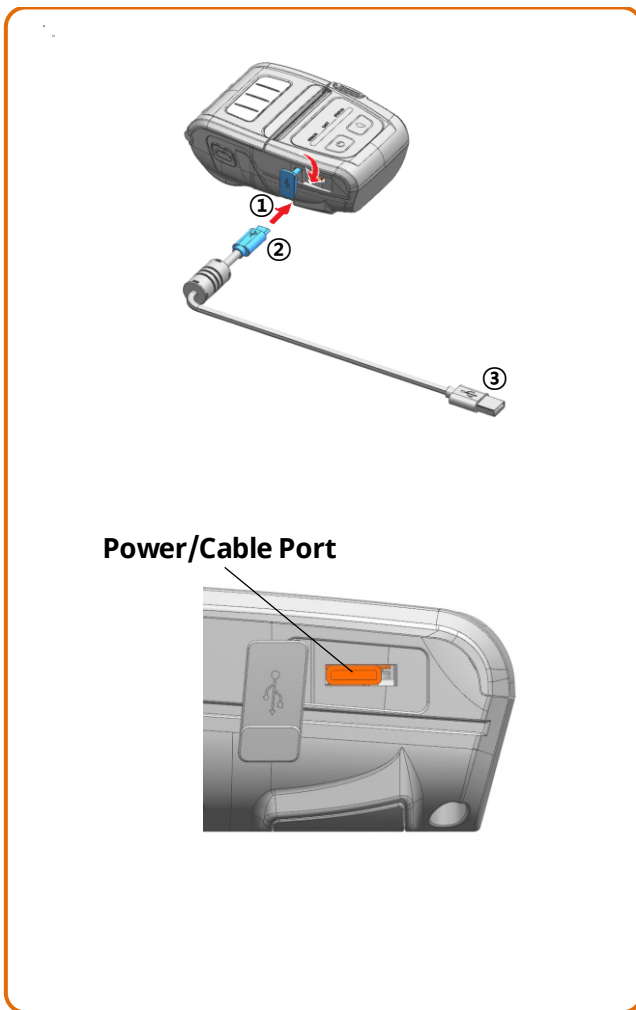


Since the battery is partially charged at the time of purchase, charge the battery prior to product use.
Before using, charge the battery with a USB Type-C cable.
AC/DC adapters are not provided.



**Always turn off the printer before removing the battery.
Otherwise, serious electrical damage or physical injury can occur.**

2-2 Battery Charging

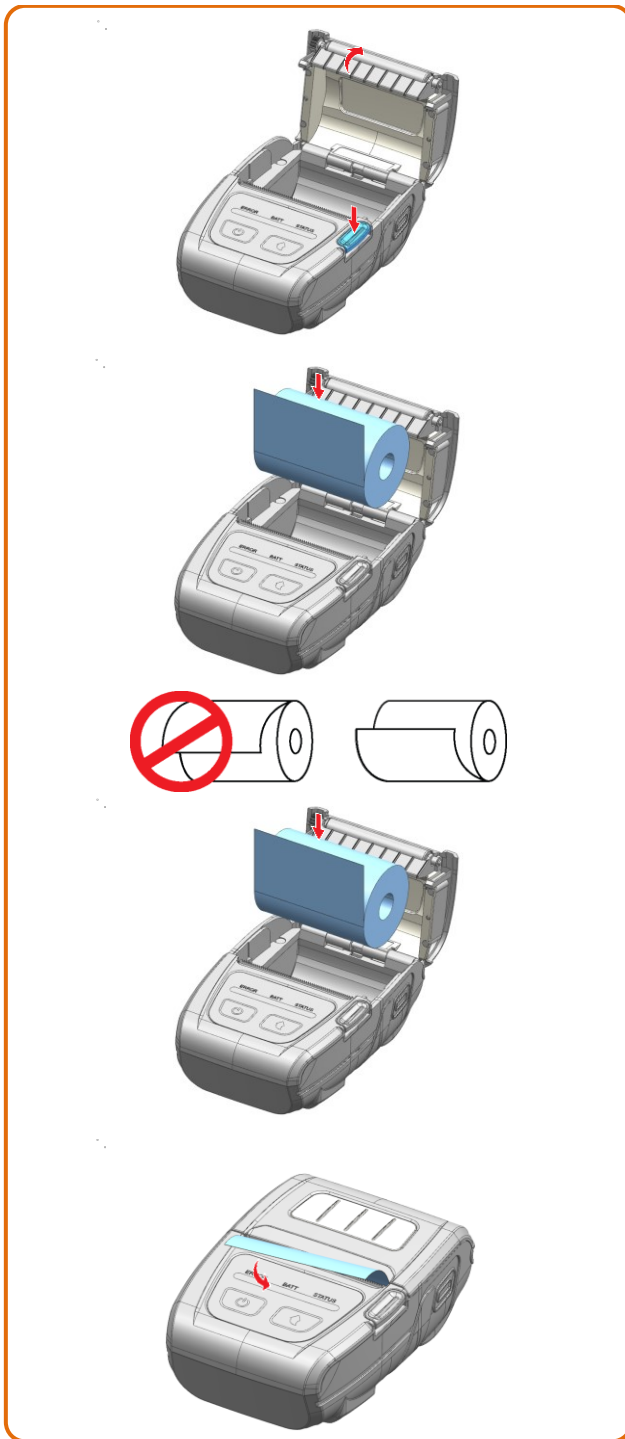


- 1) Turn off the printer power.
- 2) ① Open the external interface cap.
- 3) Connect USB Type-C cable ② to printer power/cable port.
- 4) Charge after connecting USB Type-C cable ③ to your device's (PDA, PC, etc.) USB port.

LED	Charge Status	Charge Time
Red LED On	Charging	Within 6 hours
Green LED On	Fully Charged	
Red LED Blinking	The battery is not installed properly	



- Charge the battery only after disconnecting the power to your device.
- Use only genuine products supplied by Bixolon. Otherwise, the product may malfunction or there is a risk of personal injury.

2-3 Media Installation

1) Press the Open button to open the Media cover.

2) Insert the Media as shown in the image. (Remove any remaining core of a fully used Media roll.)

3) Take care to align the Media correctly.

4) Pull the Media out as shown in the image and close the Media cover.

5) Tear off any excess Media in the direction of the side of the printer.



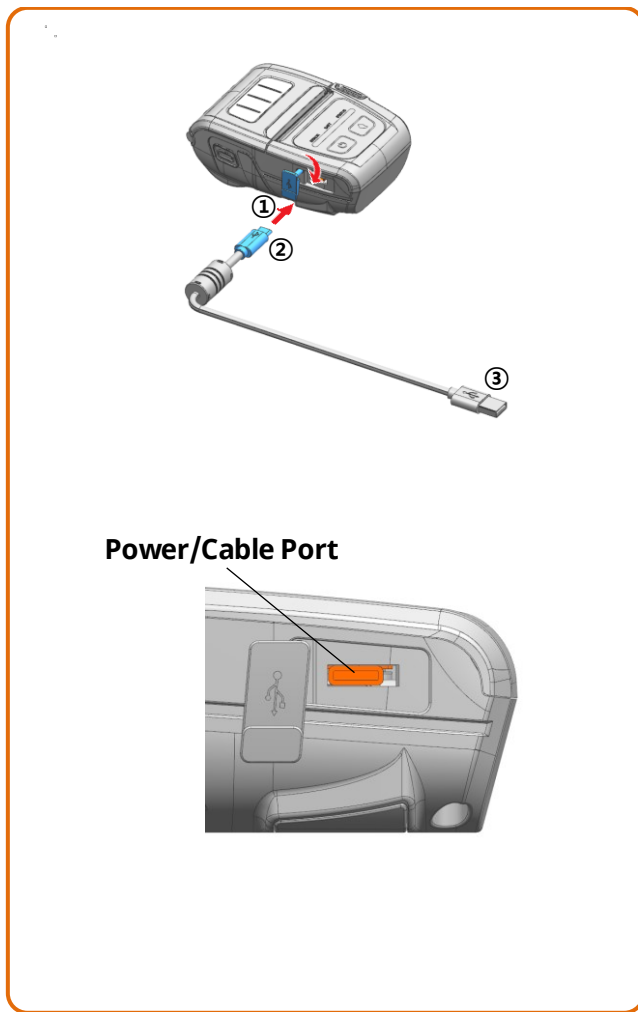
- When opening or closing the cover, be careful not to pinch your fingers.
- Do not open the print head levers while the printer is printing. The printer may be damaged.

2-4 Bluetooth Connection

- 1) The printer can be connected to devices equipped with Bluetooth communication capacity (PDAs, PCs, etc.).
- 2) Use the Bluetooth connection function supported by the device to connect to the printer.



- Refer to the Bluetooth Connection Manual for detailed information on its connection.
- You can check the bluetooth environment (authentication, encryption, connection mode) via the self-test page.

2-5 Interface Cable Connection

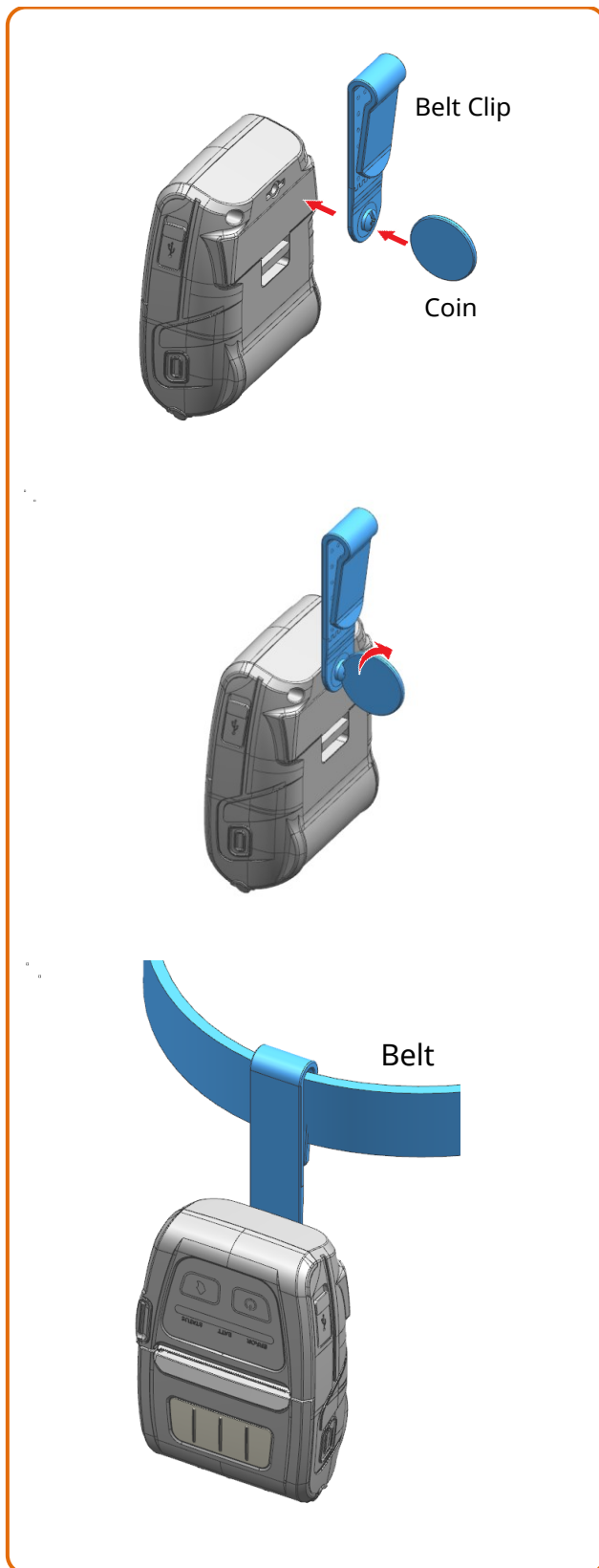
- 1) ① Open the external interface cap.
- 2) Connect USB Type-C Cable ② to printer power/cable port.
- 3) Connect USB Type-C cable ③ to your device's (PDA, PC, etc.) USB port.



A USB Type-C cable that supports USB 2.0 or a USB Type-C cable supplied (sold separately) by Bixolon can be used as an interface cable.

3. Use

3-1 Using Belt Clip



1) Insert the belt clip screw into the belt clip hole.

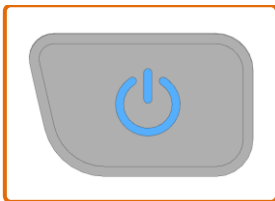
2) Use a coin to tighten the belt clip screw as shown in the image.

3) Attach the clip to the belt.

3-2 Using Control Button



3-5-1 Power Button



This button is used to turn the printer on and off.

- 1) When the printer is off, press this button for approximately 2 seconds to turn on the power.
- 2) When the printer is on, press this button for approximately 2 seconds to turn off the power.

3-5-2 Media Feed Button



To feed media manually, press this button.

In addition, self-testing and Hexadecimal Dumping can be done.

- 1) Refer to "4. Self-Test" for self-test information.
- 2) Refer to the "service manual" regarding Hexadecimal Dumping.

3-5-3 ERROR/BATT/STATUS LED**• ERROR LED**

1) If the red LED is blinking, the media cover is open or missing, or the head is overheated. (Replace the roll of media or turn off the printer for at least 10 minutes.)

2) If the red LED continues to blink, it may indicate a more serious problem with the product. Call your authorized service center.

• BATT LED

1) If the green LED is lit, the battery is fully charged.

2) If the green LED is blinked, the battery is half charged.

3) If the red LED is blinked, the battery must be charged or replaced.

• STATUS LED

When using Bluetooth, if the green LED and the battery indicator are both on, the printer is connected to Bluetooth.

4. Self-Test

Run the self-test to check the setting information when you are setting up the printer for the first time or if there is a problem.

If no issue is found with the printer after running the self-test, examine the other devices or peripherals and software. This function is independent of such other devices and software.

4-1 Self-Test Instructions

- 1) Turn the printer power off and close the printer media cover.
- 2) Press and hold the media feed button and power button simultaneously to turn on the printer.
- 3) After printing begins, release the two buttons.

4-2 Self-Test Sample

 SPP-C200
 SELF TEST INFORMATION

Firmware Version

: V01.00 STOBi 010122

Configuration

Memory Switch:
 MSW[1] 3/4 ON
 MSW[5] 1/2/3/4 ON
 MSW[6] 2/4 ON

Speed: 80mm/s
 Density: 100%
 Emulation: BXL/POS
 Tear Option: Tear off
 Printer Method: Direct Thermal
 Buffer Capacity: 256Kbytes

Character

Encoding Type: Codepage
 Code page: PC437
 Default Font Size: 12x24(Font A)

Serial Number

Product: STD000KS22010001

Media

Media Type: Continuous

Sensor

Sensor Type: Reflect

Power Management

Power off Time: 15 Min
 Idle mode Time: 10 Sec

Battery

NTC: OK

Buzzer

Paper out Bell: Off
 Low Battery Buzzer: On

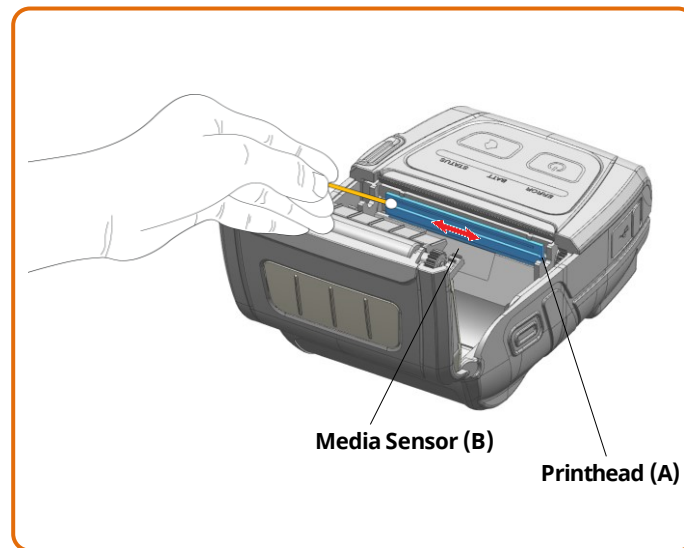
 BLUETOOTH CONFIGURATION

Version: 4.0.2
 Device Name: SPP-C200
 Role Mode: Classic
 Pairing Mode: SSP(Just Works)
 Connection Mode: 2
 Auth. & Encry. : Enable
 iOS Support: Enable
 Device Addr. : 40:19:20:00:00:00



*** Completed ***

5. Cleaning



- 1) Turn off the printer and disconnect all cables from the product.
- 2) Open the media cover and remove any media inside.
- 3) Clean the printhead (A) using the cloth or cotton swab soaked in alcohol for medical.
- 4) Using the cloth or cotton swab soaked in alcohol for medical, remove the media dust from the black mark sensor (B).
(Sensor could be located in the middle or on left or on right)
- 5) Do not use the printer for one to two minutes after cleaning until the alcohol for medical has completely evaporated and dried.
- 6) Insert the media and close the media cover.



- The head is very hot while the printer is running.
When cleaning the head, be careful not to touch the heating part of the head with your hands.
- The head may be damaged by static electricity, etc.
- Be careful not to scratch the head.
- Be sure to turn off the power before you proceed with cleaning

6. Appendix

6-1 Printer Specifications

Item	Description	
Printing	Printing Method	Direct Thermal Printing
	Print Speed	Up to 80 mm/s (3.15 ips)
	Resolution	203 dpi
	Character Size	Font A: 12 × 24 Font B: 9 × 17 Font C: 9 × 24
	Characters Per Line	Font A: 32 Font B/C: 42
	Character Set	English: 95 Expanded Graphics: 128 × 33 pages International: 32
	Barcode	1D: UPC A, UPC E, CODE 39, CODE 93, Code 128, EAN 8, EAN 13, ITF, Codabar 2D: PDF417, DATAMATRIX, MAXI, QR Code, GS1 DataBar, Aztec
	Emulation	BXL/POS
	Sensor	Media Sensor
	Cutter Type	Tear-Bar
Media	Media Shape	Receipt media
	Outer Diameter of Media Roll	Max. Ø40 mm (1.57 inch)
	Width	58mm (2.28inch)
	Thickness	0.07 ± 0.005 mm
Reliability	Printer	25 km (Receipt media)
	Battery	Rechargeable up to 500 times
Communications	Interface	USB Type-C, Bluetooth V5.0(Classic / LE)
Battery	Type	Lithium-ion
	Output	Voltage: 3.6 VDC (4.2 ~ 3.0VDC) Capacity: 3000 mAh
	Charging Time	Within 6 hours * Charging current and charging time may depend on the type (optional) of charger.
Usage Conditions	Temperature	Printer Operating: -15 ~ 50 °C (5 ~ 122 °F) Printer Storage: -30 ~ 70 °C (-22 ~ 158 °F) Charging: 0 ~ 50 °C (32 ~ 122 °F) * Refer to the temperature conditions on Battery Safety Warning
	Humidity	Printer Operating: 10 ~ 80 % RH (No condensation) Printer Storage: 10 ~ 90 % RH (No condensation) Battery Operating: 20 ~ 70 % RH (No condensation) *Refer to the temperature conditions on Battery Safety Warning
Dimensions	Printer	79.5 × 115.5 × 45 mm (3.13 × 4.55 × 1.77 inch)
Weight	Printer	Printer: approx. 172.5 g (0.43 lbs) Printer+Battery: approx. 224 g (0.49 lbs) Printer+Battery+Media: approx. 280 g (0.62 lbs) Package: approx. 526 g (1.16 lbs)
Accessories	Basic Items	Battery Pack, USB Type-C, Belt Clip, Installation Guide

